

BLADE

Machinery Limited

Professional Lawn Care Equipment & Tracked Dumpers



Professional Equipment for a Professional Finish

Engines & Clutches



GC160
3/4" Shaft
Horizontal Crankshaft



GX120
3/4" Shaft
Horizontal Crankshaft
Oil alert



GX160
3/4" Shaft
Horizontal Crankshaft
Oil alert



GX390
1" Shaft
Horizontal Crankshaft
Oil alert



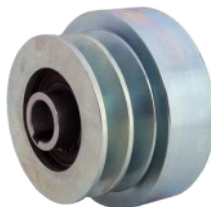
BM4T027 / 37
Compactor plate clutch
Fits 3/4" / 5/8" Shaft
100mm Drum Size



BM4PO77
Turf Cutter / Scarifier
Clutch. Fits 3/4" Shaft
Pulley dia 3.5"



BM1600
Stump Grinder & Flail
Fits 3/4"-1" Shaft
Single Pulley
Pulley dia. 3.5" to 5.5"



BM1800
Stump Grinder & Flail
Fits 1" to 1-1/8" Shaft
Double Pulley
Pulley dia. 4.0" to 5.5"

BanNerman B-MTD-SD MINI TOP DRESSER

Virtually any area of natural grass will benefit from an application of good rich organic top dressing at least once a year.

The Bannerman Mini-Topper is designed to apply top dressing quickly and evenly on small to medium sized high wear turf grass areas and residential lawns. The spreading drum is wheel driven and has a spreading width of approximately 60 cm.

You can spread a variety of top dressing products using the Bannerman Mini-Topper, from composted garden waste (PAS100) through to fine Silica Sand. The hopper has a capacity of 100 Lt.



Specifications:

Height:	60 cm
Width:	89 cm
Spreading Width:	60 cm
Weight:	30 kg

Top Dressing with good organic matter after over-seeding will ensure quicker grass seed germination, less loss of seed through birds feeding, this will create faster growth and a thicker healthier grass plant. The mini-topper is equipped with adjustable front and rear brushes in-between the hopper and drum, opening or closing the distance between the front brush and drum controls the flow rate of product from the hopper.

BanNerman B-MTD-PT Power Top Dresser

When larger areas require top dressing, the operation is made easy with the Bannerman powered top dresser, with a hopper capacity of 178 litres the Bannerman powered top dresser makes dressing larger areas more cost effective.



Powered by a Honda GX120 engine coupled to 6:1 reduction gearbox, a short turning circle allowing easy manoeuvrability, with the added benefit of the ability to lock the two front caster wheels allowing you to traverse sloped areas.

Specifications:

Capacity:	178 lt
Weight:	110 kg
Height:	97 cm
Spread Width:	60 cm
Machine Width:	66 cm



BA-4 Air-Ject Aerator “Four In One”

Regular aeration encourages grass plant root systems to grow deeper and stronger, by increasing the supply of oxygen, moisture and nutrients directly into the root zone, plus the ability to relieve soil compaction, all the requirements needed for a healthy, beautiful lawn. Bannerman’s BA-4 Air-Ject Aerator is a commercial grade self-propelled, walk behind machine that can be fitted with a total of three different tine configurations, core, fracture and slitter plus an over seeding spiker tine reel, making the BA-4 a truly “Four in One” aerator.



BA-4CT-H

Bannerman’s BA-4 is a compact unit that allows easy and safe operation in confined areas, with less operator fatigue. The tine reel assembly allows a smoother operation and more holes / slits per square metre. Ballast weights maintain maximum pressure for tine penetration and operator balance

Powered by a Honda GX120 engine fitted to a 6:1 reduction gear box, gives the unit a powerful and reliable drive system.



BA-4FT-H
Fracture Tine
Aerator



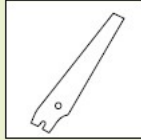
BA-4M-CT
Easy Access
Core Tine
Aerator

BANNERMAN

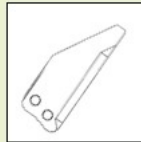
TINE INFORMATION



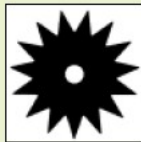
Part #08063
1/2" Core Tine



Part #08067
Slitter/Slicer Tine



Part #08112
Fracture Tine



Part #08099
Spiker Tine



Slitter Tine Reel
Fitted with either 3 mm or 5 mm Slitter Blades

Sample cores from a 1/2" closed tine



Used by most national lawn treatment professionals in the UK since 2000

<u>Tines</u>	<u>1/2" Core Tine</u>	<u>3/4" Core Tine</u>	<u>Fracture Tine</u>	<u>Slitter Tine</u>	<u>Slitter Tine</u>
Part No.	08063	08115	08112	08067	08131
Material	Hardened Steel	Hardened Steel	Drop Forged Steel	Hardened Surgical Steel	Hardened Surgical Steel
Diameter/ Thickness	1.25 cm / 1/2"	1.9 cm / 3/4"	1.25 cm / 1/2"	3 mm	5 mm
Length	21.5 cm / 8.5"	21.5 cm / 8.5"	13.75 cm 5.5"	13.75 cm 5.5"	13.75 cm 5.5"
Number of tines per unit	25	25	20	25	25
Reachable depth of penetration	7.5 cm 3"	7.5 cm 3"	12.5 cm 5"	12.5 cm 5"	12.5 cm 5"
Aeration Pattern	10 x 27.5 cm 4 "x 11"	10 x 27.5 cm 4 "x 11"	135 x 12.5 cm 14 "x 5"	10 x 27.5 cm	10 x 27.5 cm
Holes per square meter	36	36	18	36	36

Scarifier / De-Thatcher

Bannerman B-LT-14-H / 15-H / 27-H

Bannerman's Kleen Green Scarifier / Thatch Remover is designed to provide an efficient vertical cutting action, to speedily remove dead plant material and other debris from the base of the grass plant a damaging condition in grass lawns and fine turf areas. The removal of organic materials from the base of the grass plant allows water, oxygen and nutrients to circulate freely and be absorbed quickly into the root system

Fitted with 15 x 1.5 mm (1/16") offset blades the B-LT-15-H has 30 cutting tips to reduce ridging and effectively prune the grass, reducing lateral growth whilst encouraging vertical re-growth, removing thatch, controlling moss and preparing the area for over seeding.

Built for the Professional Lawn Care Specialist, Bannerman's Scarifier / De-Thatcher has been used by many national UK lawn treatment companies for the last fourteen years, the machine has proved to be a good revenue earner, that gives years of trouble-free service.



Rotor blade shaft can be fitted with either:
27 x 1/32" (0.8 mm) Fine Blades
15 x 1/16" (1.5 mm) Standard Blades
14 x 1/8" (3.2 mm) Verti-Cut Blades



1/32" (0.8 mm)



1/8" (3.2 mm)



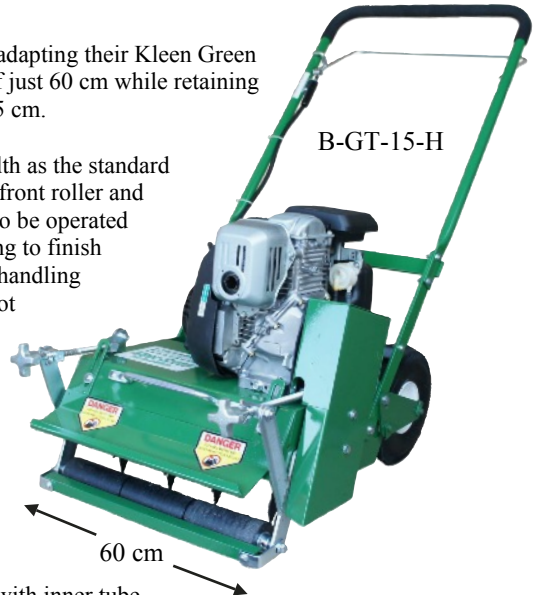
1/16" (1.5 mm)

BaNnerman B-GT-15-H / 27-H

Limited access into many properties is an increasing problem for many Lawn Care Professionals.

Bannerman have addressed this issue by adapting their Kleen Green De-Thatcher to give a maximum width of just 60 cm while retaining their standard blade operating width of 45 cm.

The B-GT-15-H has the same cutting width as the standard model but with the added advantage of a front roller and inboard wheels, this allows the machine to be operated along the edge of the lawn, thus not having to finish the edge with a rake, It also allows easier handling where access space is at a premium but not reducing the efficiency, the rear wheels can be returned to their conventional out board position if so desired.



Specifications:

- Engine: Honda GC160
- Cutting Width: 45 cm /18"
- Wheels-Rear: 25.4 cm/10" Pneumatic with inner tube, heavy duty steel rims and grease nipple
25 mm/1" bearings
- Bearing: 2 - piece eccentric lock bearing in cast flange
- Blade: 1/32" (0.8 mm) 1/16" (1.5 mm) 1/8" (3.2 mm)
- Drive Belt: 3/8" Toothed Heavy Duty
- Wheels-Front: Solid Roller or Wheels
- Weight: 58 kg

Wheels fitted outboard as standard
B-GT-27-H

B-GT-27-H Greens Thatcher fitted with 27 x 0.8mm offset blades to prevent Tracking of the cutting tips, eliminating ridging, which is particularly important on golf and bowling greens where a uniform smooth surface is essential complete with a roller fitted to replace the front wheels.



Drag Mats & Rakes

BaNerman Self Clearing Ski Rake

Self clearing Ski Rakes quickly and effortlessly collect scarification thatch into rows ready for Bagging, designed so that the rake head always stays on the ground, by drawing the rake towards you the thatch is collected, by pushing the rake away from you clears the thatch from the rake tines, this action also gives a secondary scarification to the lawn.

Two sizes are available:

Large: 72 cm with 40 laser cut & hardened steel tines 2.5 mm thick

Standard: 58 cm with 32 laser cut & hardened steel tines 2.5 mm thick

Handle: 183 cm (72") wooden handle



BaNerman Heavy Duty Thatch Rake



Heavy Duty Thatch Rakes are constructed using heavy duty laser cut steel tines, this rake can be used as a manual scarification, where the use of powered machinery isn't cost effective.

BaNerman Clamshell Rake

A completely new concept for the collection of lawn thatch, leaves and garden debris.

Simple to operate, the user holds the rake in a conventional way, when sufficient thatch has been collected slide the centre handle backwards to close the second rake head, lift the debris to a suitable receptacle and release the handle.

The rake heads are manufactured using HDPE plastic, coupled to an aluminium shaft with plastic hand grips for user comfort.



BaNerman All Steel Drag Mats



Bannerman all steel drag mats, enable you to mat lawn and turf grass areas to break-up aeration cores, lightly level undulations and swirl in top dressing material.

Fitted with a heavy duty draw chain and alloy handle, enables the user to hand draw or tow behind any small turf vehicle, for ease of handling they can be “rolled-out” and “rolled-up” quickly.

Dimensions:

0.90 cm x 120 cm (3' x 4')

120 cm x 180 cm (4' x 6')



Camisa TP680



Camisa TP680 Tracked Dumper
Max pay load 1000 kg tracked & 800 kg high lift

Engine Alternatives:

TP680H: Honda GX390 engine (petrol - recoil)

TP680S: Subaru EX40 engine (petrol - recoil)

TP680LD15: Lombardini 15 LD440 (diesel)

HI-LIFT KIT: Maximum lift height 1700 mm
(maximum lift capacity 800 kg)



Camisa TP680 Hi-Lift Dumper Max pay load 800 kg high lift

Engine - Honda GX390, Subaru EX40, Lombardini 15LD

Start - recoil or electric

Transmission - hydrostatic with epicyclical gearing.

Brakes - negative

Control lever - joystick for speed and direction control.

Tracks - rubber with spring tension adjusters.

Rollers - sealed ball bearing with thread lock spindles.

Dumper body - double acting cylinder for hydraulic tipping.

Overall dimensions - 2200 mm x 800 mm x 1150 mm.

Weight - 560 kg (un-laden).

Load Capacity - 1000 kg (lowered) - 800 kg (high lift)

Speed - from 0 to 5 km/h hydrostatic with gradual change



TP680 Hi-Lift model, allows the operator to lift and tip 800 kg to a height of 1.75 m, allowing full size skips and small commercial vehicles to be loaded without the need to use ramps.



The Hydrostatic Drive is activated by a joystick control lever for forward, reverse and directional steering



MACCHINE AGRICOLE



TP280 Eco

Engine: Honda GX160 (4.8 hp)
Gearbox: 2 forward + 1 reverse
Steering: Handle bar levers
Drive: Safety lever to belt clutch
Load capacity: 300 kg
Tipping: Manual
Weight: 160 kg
Speed: 2.49 mph

Prices From
£2,650.00
+ vat



TP500

Engine: Honda GX270 (8.5 hp)
Transmission: Hydrostatic
Steering: 1 lever to control speed
Controls: 2 levers to control direction
Load capacity: 500 kg
Tipping: Hydraulic
Weight: 295 kg
Speed: 3.11 mph



TP580

Engine: Honda GX390 (11.7 hp)
Transmission: Hydrostatic
Steering: 1 lever to control speed
Controls: 2 levers to control direction
Load capacity: 800 kg
Tipping: Hydraulic
Weight: 380 kg
Speed: 3.11 mph
Optional: Hi-lift tipping arms



We can supply the most popular control levers and hand grips fitted to Rotorvators, Tillers, Turf Cutters, Scarifiers and many other types of machinery used within the tool and plant hire industry.





RRP:
£ 550.00
+ vat



GZ1 Tiller

Engine: Briggs & Stratton
Power: 3.0 hp
Drive: Endless screw in oil
Working Width: 52-57 cm
Weight: 35 kg

RRP:
£ 689.00
+ vat



M1 Tiller

Honda GX160
Power: 4.8 hp
Drive: Belt & chain
Working Width: 30-57 cm
Weight: 59 kg



RRP:
£ 1,730.00
+ vat

G55 Rotorvator

Engine: Honda GX160 (4.8 hp)
Gearbox: Gears in oil bath
Gears: 2 forward + 2 reverse
Clutch: Conical
Working width max: 58 cm
Working depth: 13 cm
Weight: 86 kg



RRP:
£ 1,945.00
+ vat

G84 Rotorvator

Engine: Honda GX270 (8.4 hp)
Gearbox: Gears in oil bath
Gears: 2 forward + 2 reverse
Clutch: Conical
Working width max: 58 cm
Working depth: 16 cm
Weight: 96 kg



G108 Rotorvator

Engine: Honda GX270 (8.4 hp)
Gearbox: Gears in oil bath
Gears: 3 forward + 3 reverse
Clutch: Conical
Working width max: 68 cm
Working depth: 16 cm
Differential: Lockable
Weight: 122 kg



R.R.P.
£ 2.449,00
+ vat

G110 Rotorvator

Engine: Honda GX390 (11.7 hp)
Gearbox: Gears in oil bath
Gears: 3 forward + 3 reverse
Clutch: Conical
Working width max: 68 cm
Working depth: 16 cm
Differential: Lockable
Weight: 128 kg



R.R.P.
£ 2.750,00
+ vat

For more information or to book a demonstration please contact:

BLADE

Machinery Limited

Professional Lawn Care Equipment & Tracked Dumpers

BLADE Machinery Limited

The New Barn
Shellow Lane
Congleton
Cheshire
CW12 2NX
United Kingdom

Phone: 01260 278 798
Mobile: 07530 951 009
E-mail: info@blademachinery.co.uk
Web: www.blademachinery.co.uk

PROFESSIONAL MACHINES FOR A PROFESSIONAL FINISH